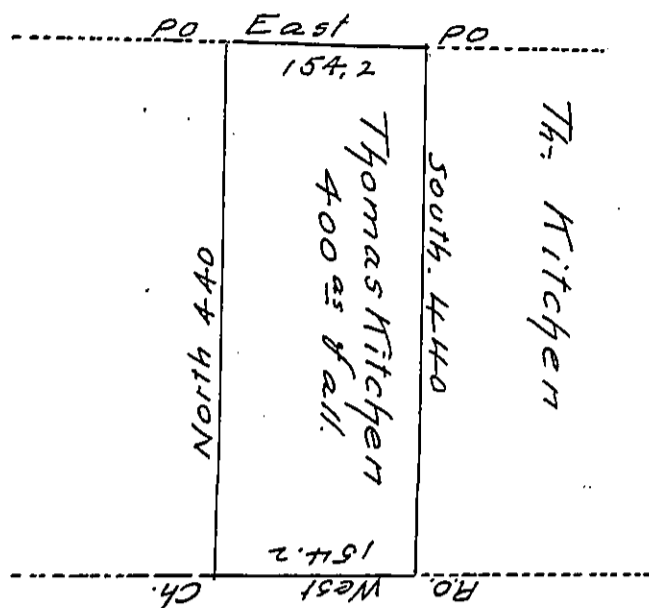


Hanna Childs



Wm Childs

Situated in ~~Chap~~ Beech Creek Township Clinton County.

Surveyed the 14 day of December 1858 to Thomas Kitchen

By virtue of his Warrant for 383^{acs} Bearing date the 9 day of December 1858. Containing 400^{acs} and all of Six per Cent for roads &c.

Wm P Baird Co. Sur

To John Howe Esq

Sur Gen of Penna.

IN TESTIMONY that the above is a copy of the original remaining on file in the Department of Internal Affairs of Pennsylvania, made conformably to an Act of Assembly approved the 16th day of February, 1833, I have hereunto set my Hand and caused the Seal of said Department to be affixed at Harrisburg, this tenth day of August 1905

Grace D Brown
Secretary of Internal Affairs.